

**SERVIZIO SANITARIO REGIONALE  
EMILIA - ROMAGNA**

Istituto Ortopedico Rizzoli di Bologna  
Istituto di Ricovero e Cura a Carattere Scientifico



ALMA MATER STUDIORUM  
UNIVERSITÀ DI BOLOGNA  
DIPARTIMENTO DI  
SCIENZE BIOMEDICHE E NEUROMOTORIE

Nicola Baldini

# **INTELLIGENT ORTHOPAEDICS**

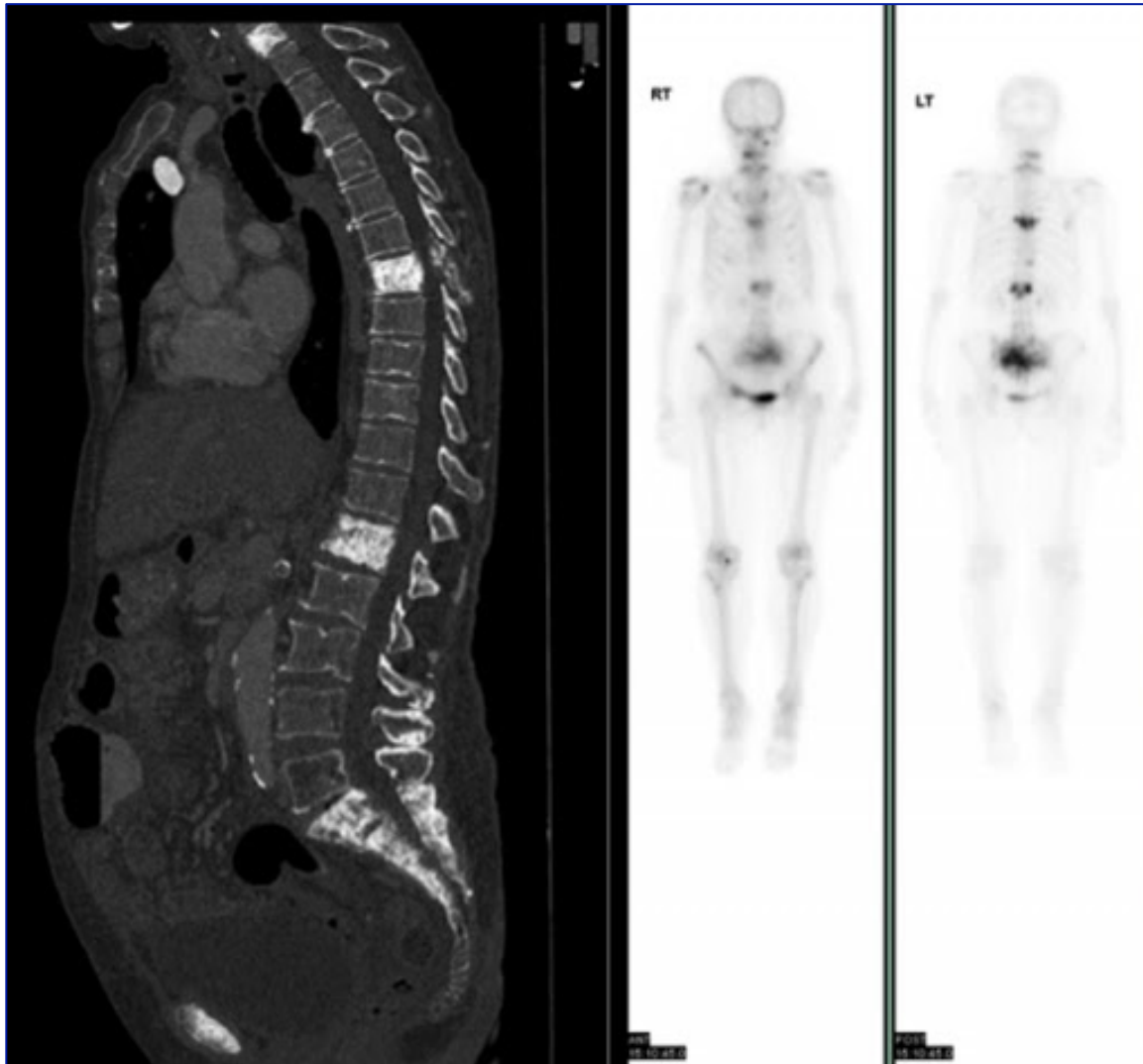
**A joint effort exploring  
novel solutions for research and care**



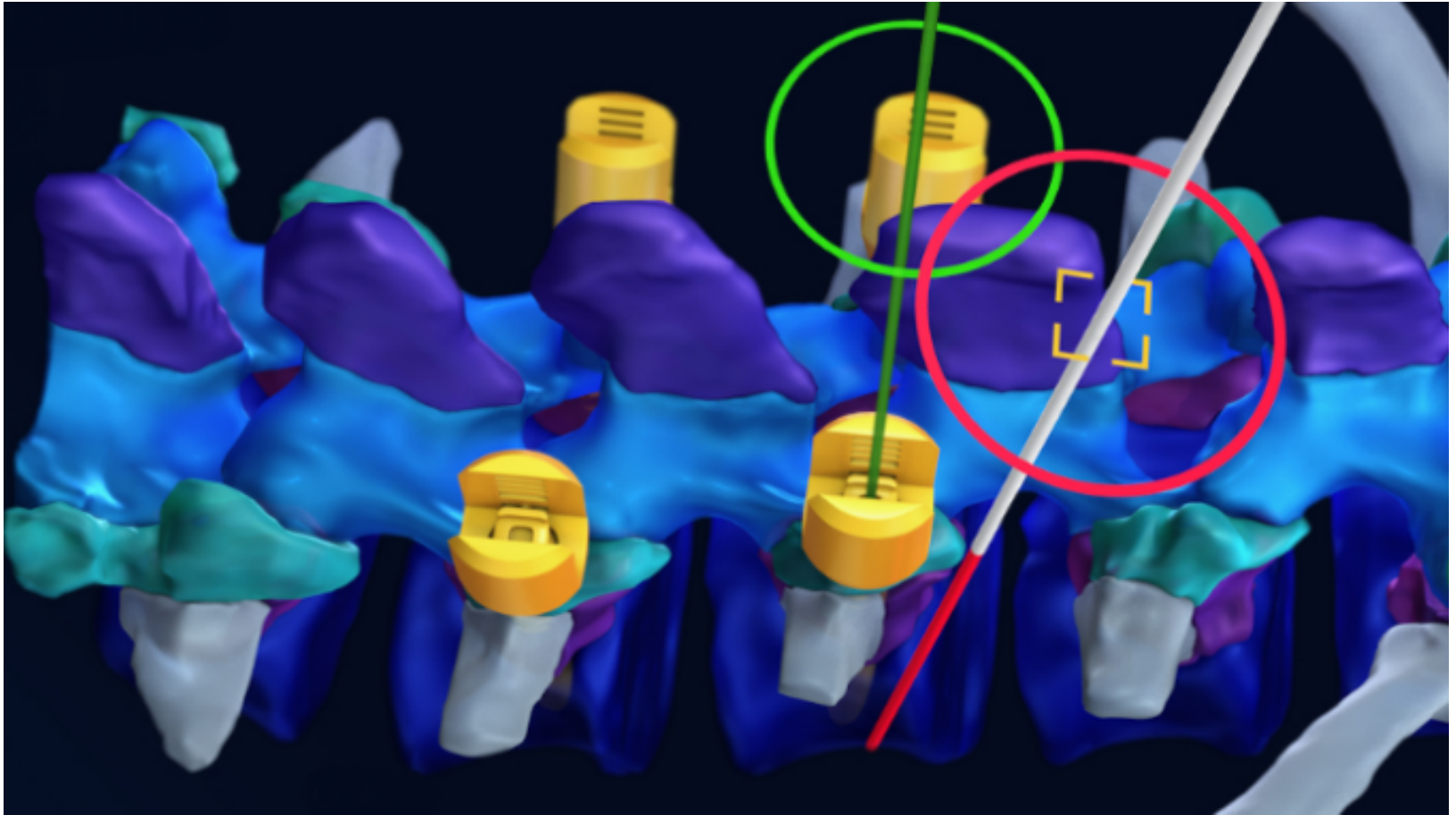
# Image recognition



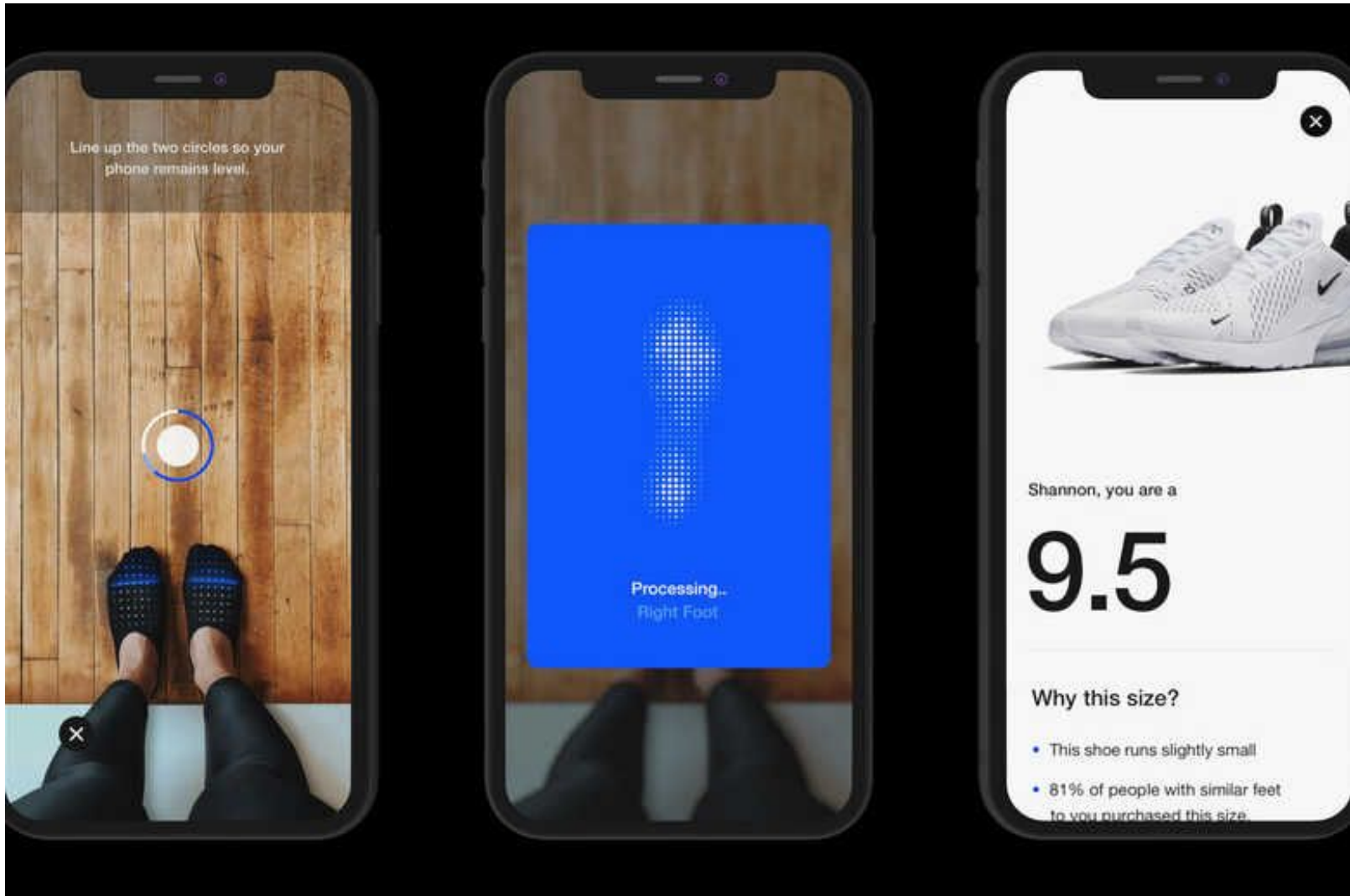
# Risk prediction



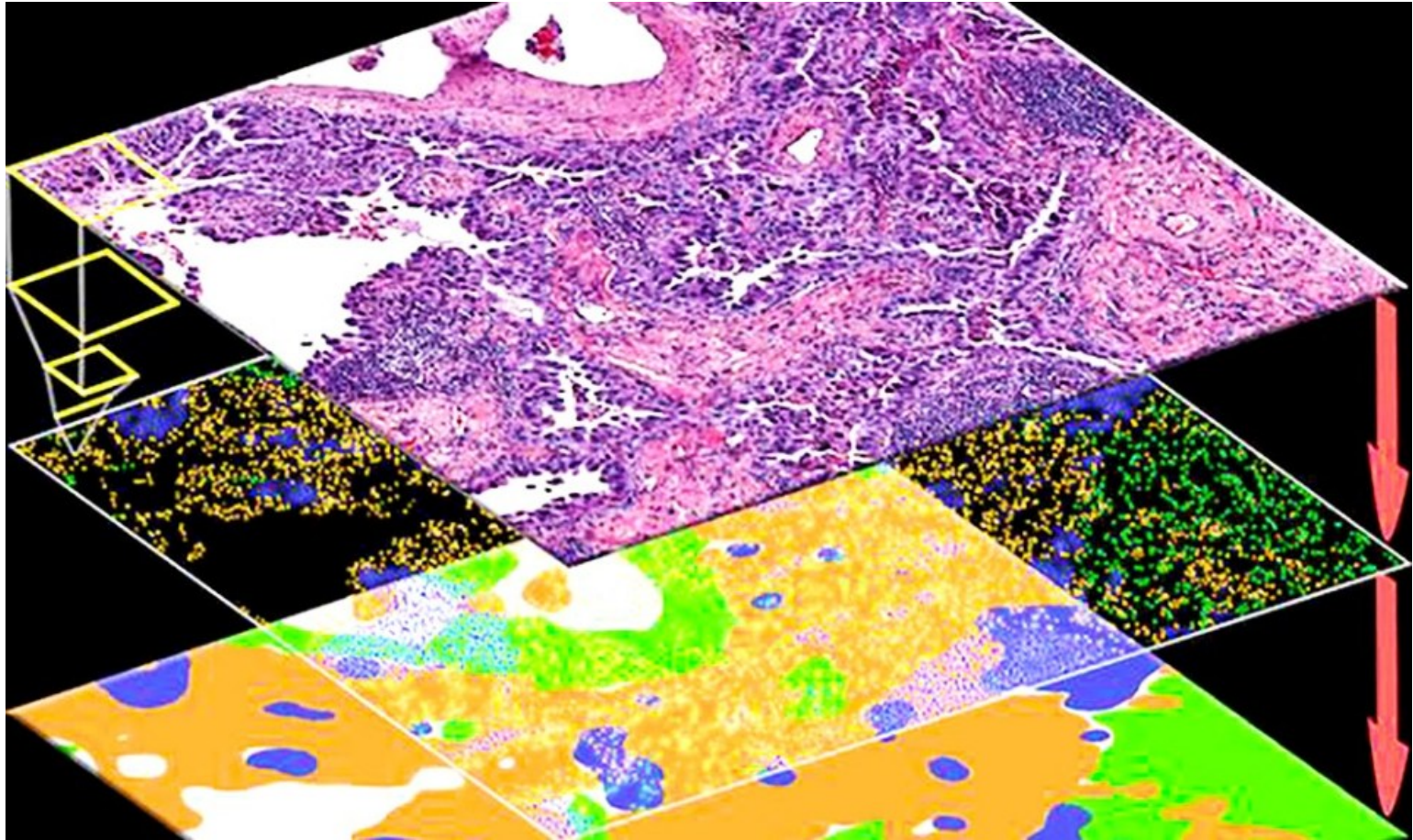
# Augmented reality



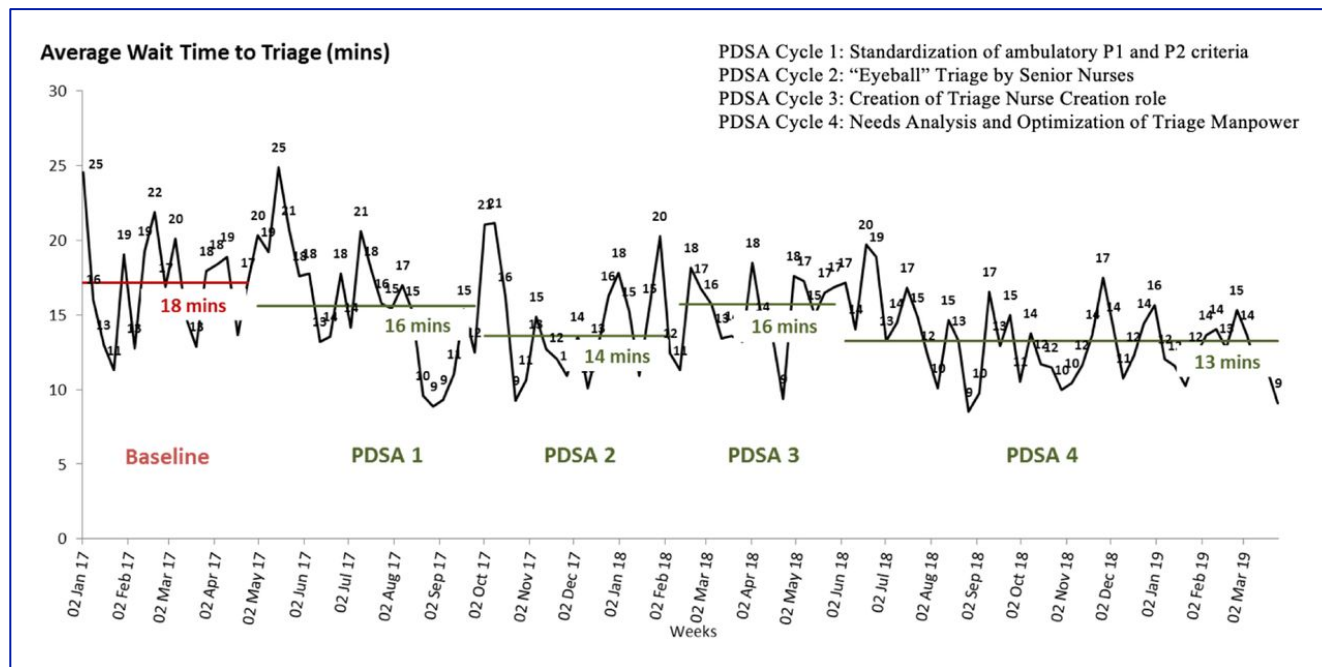
# Wearable devices



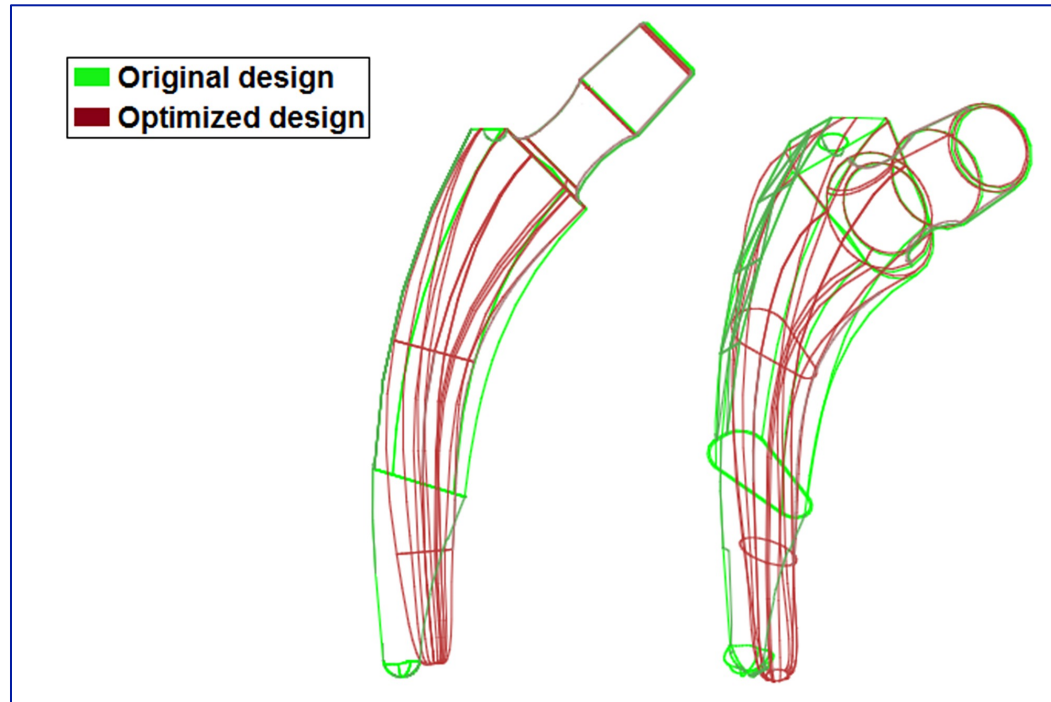
# Cancer diagnostics



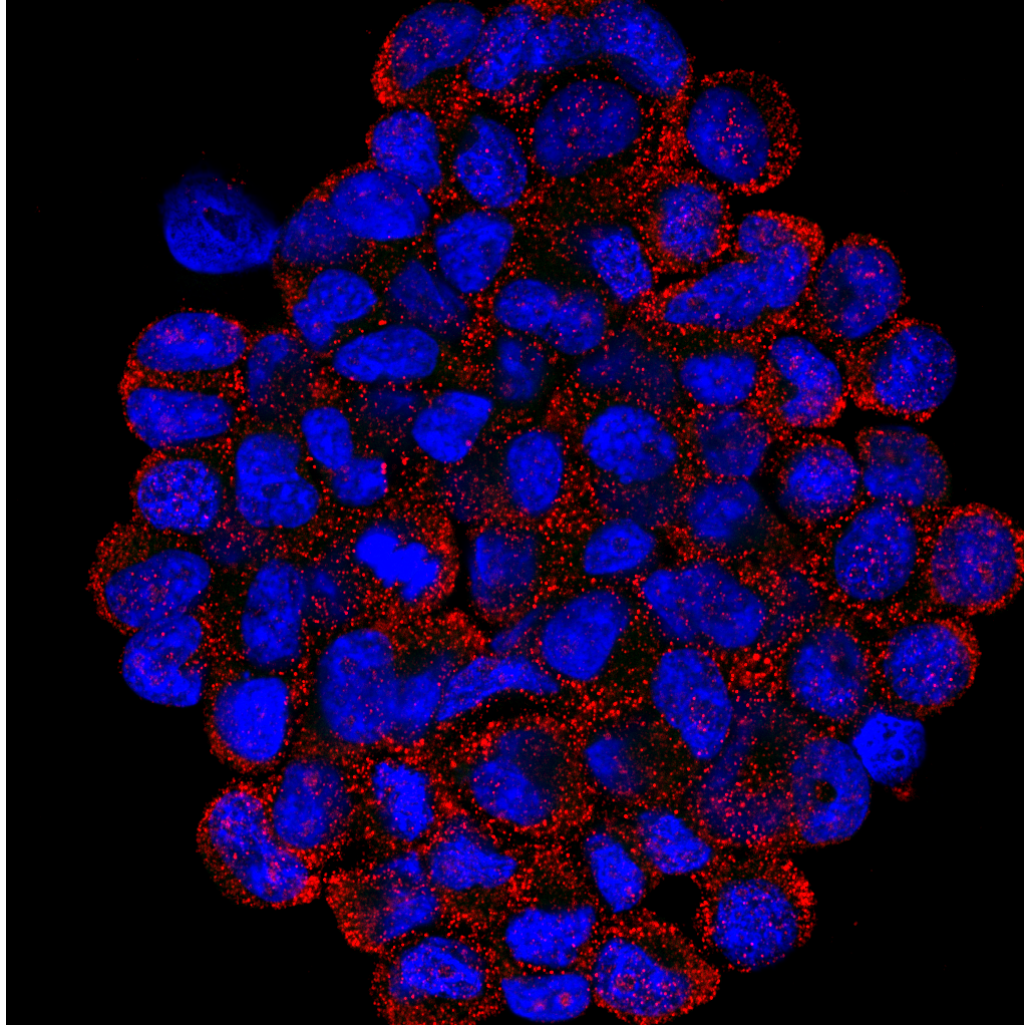
# Healthcare management



# Research: optimization of prosthetic design



# Research: prediction of cancer cell behavior





# Research, Innovation & Technology Department

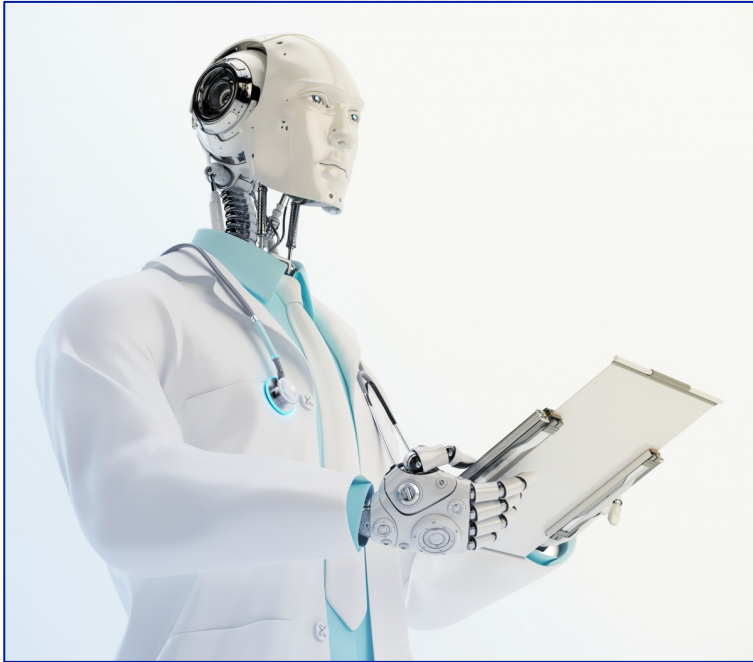


AI Joint Lab

# Today's Medicine at the crossroad

- **Increasing costs and jobs allocated to healthcare** (waste of resources, inefficiencies in workflow, inequities, insufficient time between patients and physicians)
- **Deteriorating key outcomes** (diagnostic errors, mistakes in treatment)

# “Will doctors be AIs with a human touch?”



- Better treatment
- Better management

- More time
- More attention
- More interaction